

# MATRIX STUDIOS

*Est. 1977*

An Introduction

# WELCOME TO MATRIX

Come and join our growing group of creatives, innovators and budding businesses at Matrix Studios!

For almost 50 years our recording studios have housed some of the biggest names in music, helping shape London's sound.

Today, we have evolved into a relaxed, modern workspace with warehouse-style offices and plenty of amenities on-site and in nearby Fulham.



## FLOORPLAN

11.5 ft

15.5 ft

181 sq/ft



Door

### UNIT 5b

£1200+ vat per month

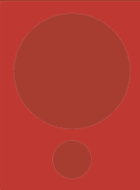
Deposit £3600

Inclusive of all utilities, business rates, use of the meeting rooms

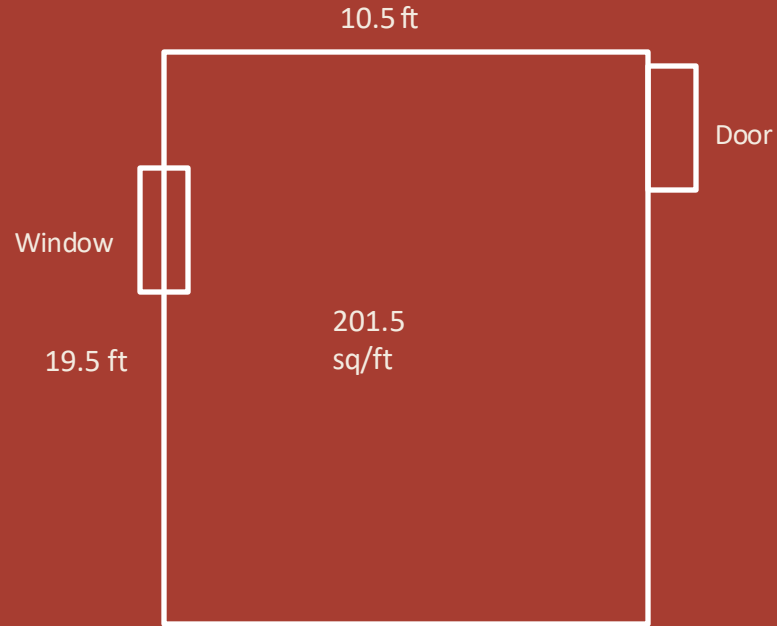
Wifi - £60 + vat p/m



Our prices include electricity, building insurance, business rates, cleaning, maintenance, reception & post services and use of both our boardrooms and break out zones, heating & cooling.



## FLOORPLAN



### UNIT 5a

£1500+ vat per month

Deposit £4500

Inclusive of all utilities, business rates, use of the meeting rooms

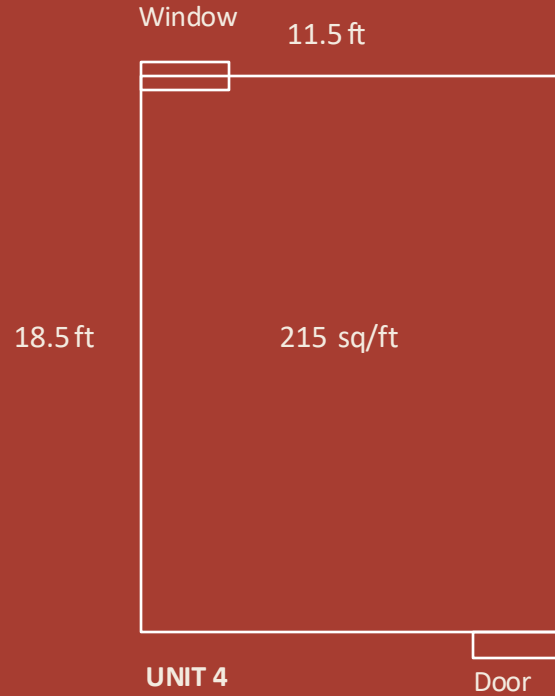
Wifi - £60 + vat p/m



Our prices include electricity, building insurance, business rates, cleaning, maintenance, reception & post services and use of both our boardrooms and break out zones, heating & cooling.



## FLOORPLAN



£1700+ vat per month

Deposit £5100

Inclusive of all utilities, business rates, use of the meeting rooms

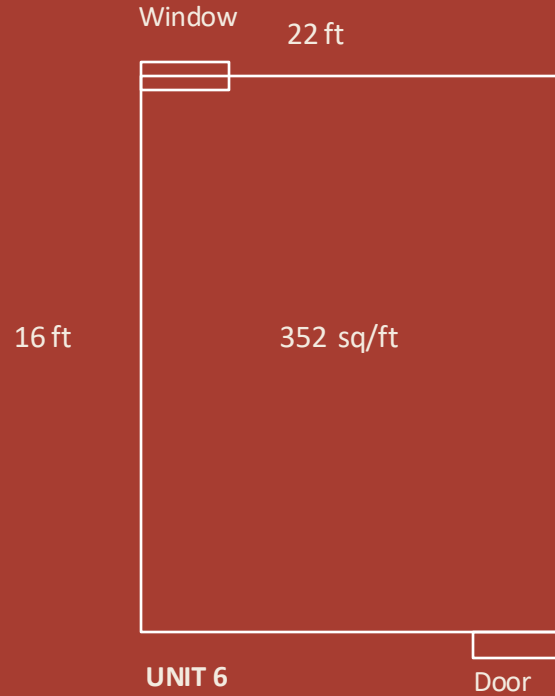
Wifi - £60 + vat p/m



Our prices include electricity, building insurance, business rates, cleaning, maintenance, reception & post services and use of both our boardrooms and break out zones, heating & cooling.



## FLOORPLAN



£2450+ vat per month

Deposit £7350

Inclusive of all utilities, business rates, use of the meeting rooms

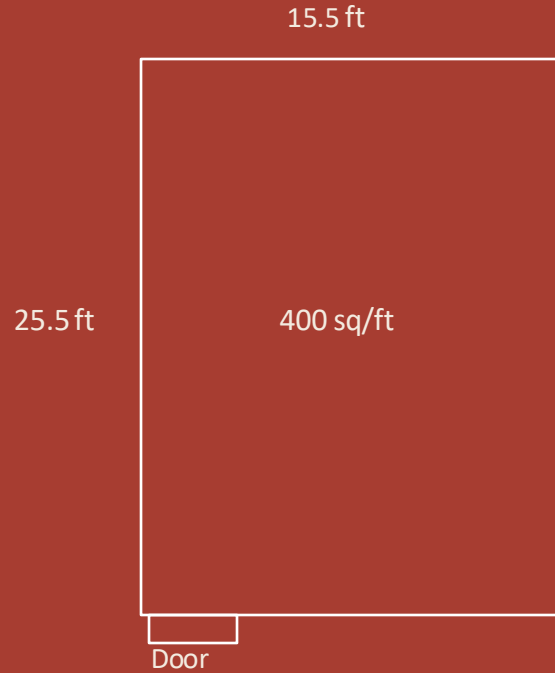
Wifi - £60 + vat p/m



Our prices include electricity, building insurance, business rates, cleaning, maintenance, reception & post services and use of both our boardrooms and break out zones, heating & cooling.



## FLOORPLAN



### UNIT 33

£2600 + vat per month

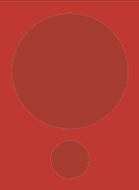
Deposit £7800

Inclusive of all utilities, business rates, use of the meeting rooms

Wifi - £60 + vat p/m



Our prices include electricity, building insurance, business rates, cleaning, maintenance, reception & post services and use of both our boardrooms and break out zones, heating & cooling.





## FLOORPLAN



£2600 + vat per month

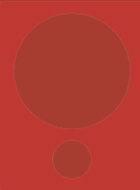
Deposit £7800

Inclusive of all utilities, business rates, use of the meeting rooms

Wifi - £60 + vat p/m

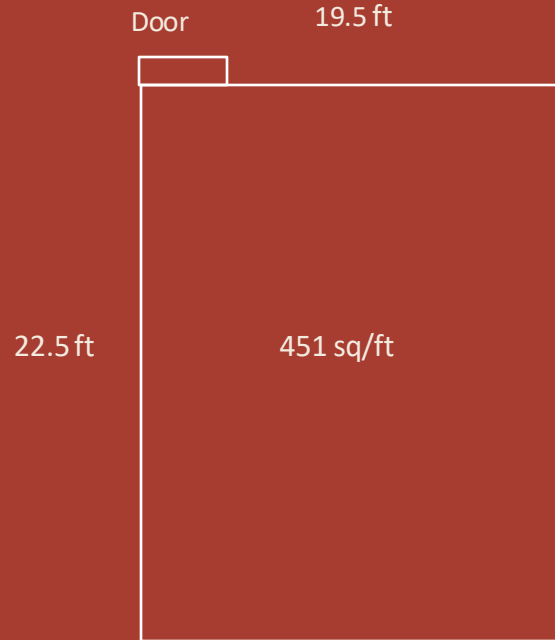


Our prices include electricity, building insurance, business rates, cleaning, maintenance, reception & post services and use of both our boardrooms and break out zones, heating & cooling.





## FLOORPLAN



### UNIT 55

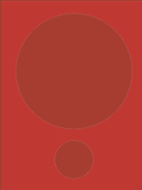
£2700 + vat per month

Deposit £8100

Inclusive of all utilities, business rates, use of the meeting rooms

Wifi - £60 + vat p/m

Our prices include electricity, building insurance, business rates, cleaning, maintenance, reception & post services and use of both our boardrooms and break out zones, heating & cooling.



## CO-WORKING



Hot Desking- £30/day  
£199/month

Fixed Desk- £50/day  
£350/month

Private Office- £50 per person

### Included:

- ❑ Electricity, heating and cooling
- ❑ Building insurance and business rates
- ❑ Access to 3 boardrooms and breakout zones
- ❑ Cleaning and maintenance
- ❑ Reception and post handling
- ❑ Fast Wi-Fi and plenty of natural light!



## Accessible all hours

Matrix is open early to late, 7 days a week. Night access can be scheduled upon request.

---

## Showers

There are several showers in the building, accommodating all kinds of schedules.

---

## State-of-the-Art Recording Studios.

Designed by renowned acoustician, Nick Whittaker, the studios speak for themselves with a history of recording the biggest names in music.

---

## Free Bike Parking

The best way to get around West London, cycling is accommodated by free parking in the courtyard.

---

## Café & Terrace

The meeting point for artists, creatives and businesses, Matrix's vibrant café offers a variety of beverages and freshly cooked food.

---

## Networking Opportunities

Collaboration is our currency at Matrix, with countless opportunities for networking.

---

## Concierge Reception

Matrix's front desk concierge manage deliveries, security, maintenance and anything else that makes your work day seamless.

---

## Meeting Rooms

Two spacious meeting rooms are available for booking through our automated system, free as part of the tenancy. Catered meetings are available upon request.

---

## Private Gym, Reformer Pilates & Personal Training

Tenants benefit from a discounted rate at Lift Studios—personal training with a holistic approach to fitness and wellness.

## Flexible Monthly Contracts

The complex sets itself apart by the offering flexible contracts for individual tenant needs.

## Discretion & Privacy

Hidden from the hustle and bustle of the street, the complex is gated so tenants can enjoy privacy and seclusion.

## Dog Friendly

Matrix welcomes furry friends to join their owners at work!

## LOCATION



Matrix Studios is located a 5-minute walk away from Parsons Green tube station. This leafy corner of West London is full of charming café's, pubs, parks and restaurants.

# MATRIX STUDIOS

*Est. 1977*

91 Peterborough Road,  
London, SW6 3BU

+44 (0) 20 7384 6400

[bookings@matrix-studios.co.uk](mailto:bookings@matrix-studios.co.uk)

