

**LEWIS
& CO**

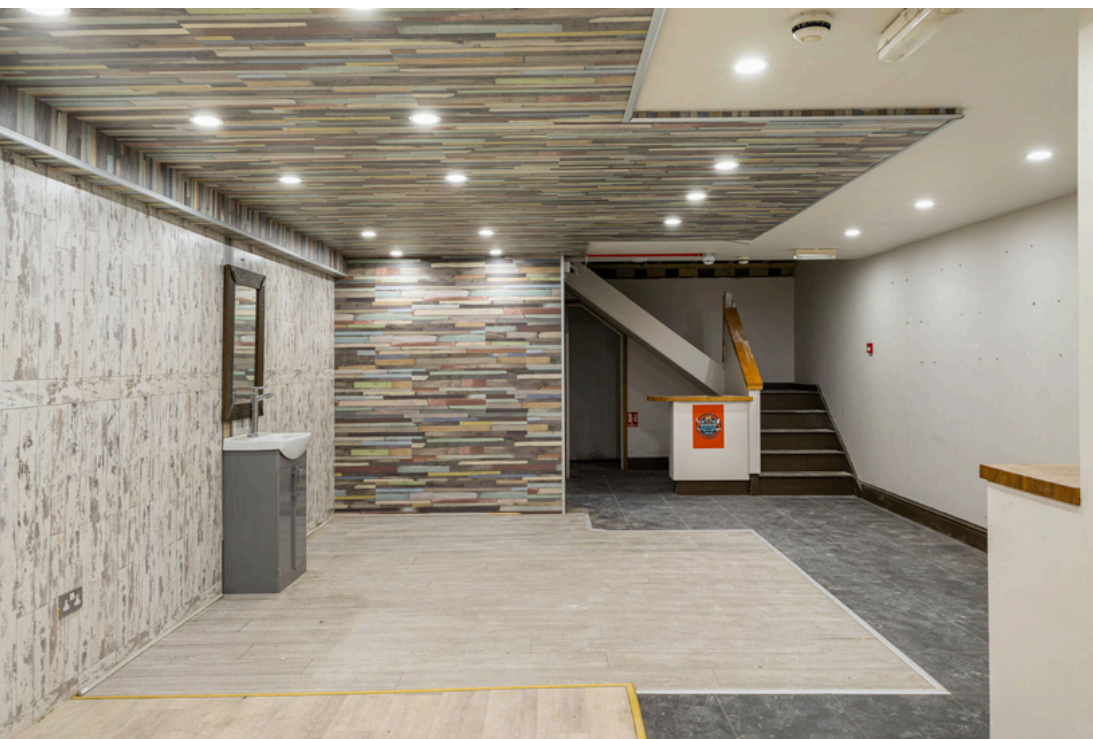


911 FULHAM ROAD

FULHAM, SW6 5HU

SHOP TO LET

1,395 SQ FT



911 FULHAM ROAD

FULHAM, SW6 5HU

LEWIS
&CO

DESCRIPTION

The unit comprises an open plan retail unit arranged over the ground floor as well benefiting from a spacious basement. The unit also benefits from a large frontage onto the Fulham Road.

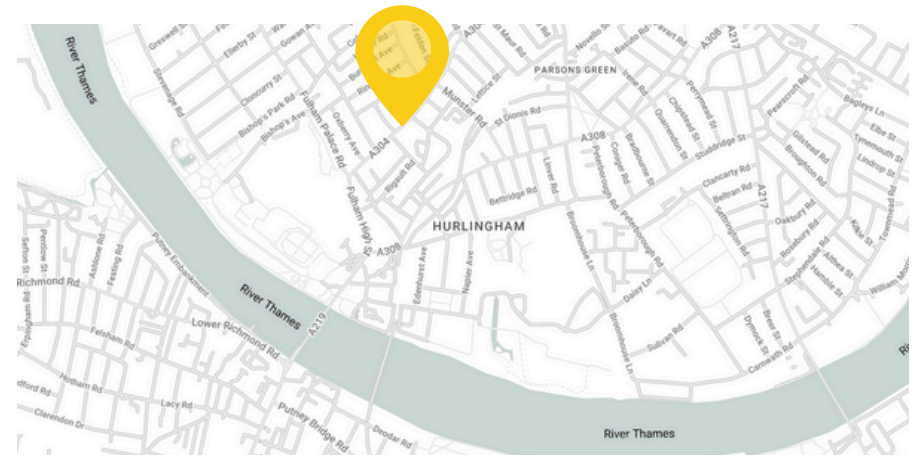
The property currently has E class use and has a kitchen, shower and WC facilities.

LOCATION

The property is situated in the heart of Fulham Road in an extremely prominent position. The unit provides an excellent opportunity to acquire a retail unit in the heart of this thriving street.

The street contains a number of well-known national retailers and restaurant units as well as a host of fantastic independent retailers.

The property benefits from it's close proximity to Fulham Broadway and Parsons Green Stations (District Line), providing quick access into Central London.



TERMS

A new FRI lease is available.

EPC

Available upon request.

RENT

Rent: £45,000 per annum.

VAT

Applicable.

RATES

Interested parties are advised to make their own enquires with the local authority.

VIEWING

Strictly by appointment through the sole agents.

ALEX LEWIS

alex@lewisco.co.uk
mob: 07815 788 825

BILLY WRIGHT

billy@lewisco.co.uk
mob: 07563 393 940

020 3940 5575
WWW.LEWISCO.CO.UK

FLOOR AREAS

Unit	sq ft	sq m
GF	685	64
Basement	710	66
Total	1,395	130

MISREPRESENTATION ACT- The particulars contained in this brochure have been produced in good faith, are set out as a general guide and do not constitute the whole or part of any contract. All liability, negligence or otherwise, arising from the use these particulars is hereby excluded. Compiled January 2026.